

# METALLIC FOIL SETUP GUIDE

## STEP 1:

Ensure the file matches the product's required dimensions.

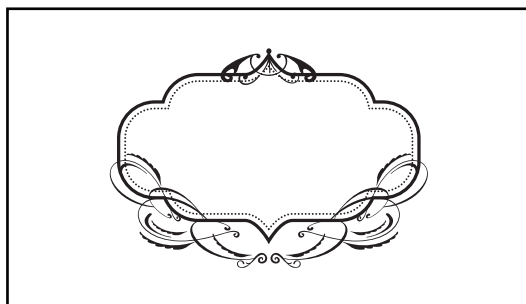
Ensure that the artwork is created in **CYMK 300 dpi with 1/16 inch bleeds** on all sides.



## STEP 2:

Separate artwork into **two files**:

One is for **metallic foil finish**, for which the artwork's color should be set to **100% black (K)**.

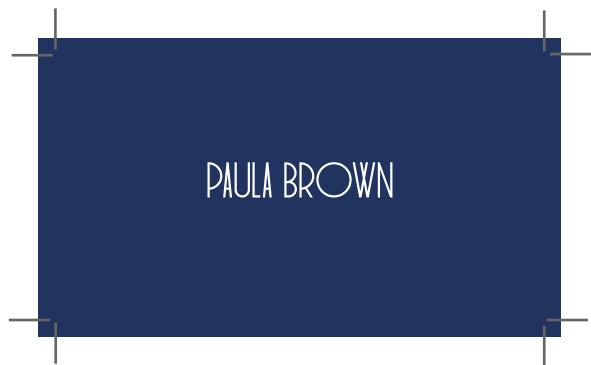
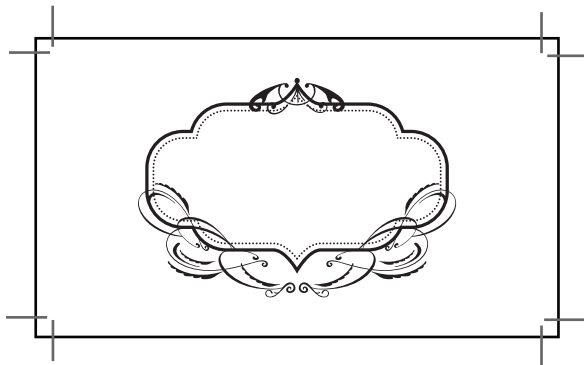


Another file should be in the **CMYK** color space for artwork that is not foil printed.



**STEP 3:**

Export all files into **PDF** format with bleeds.



**Note:** Text size should be no smaller than **10 POINT** and font should not be of **BOLD type** to allow foil to appear clearly and text to be readable. Failing to do so may result in delays and/or unexpected print results.



**NEED MORE HELP? FEEL FREE TO CALL US AT 1 866 899 2499**